

# Local Market Update through January 2018

A Research Tool Provided by the Staten Island Board of REALTORS®, Inc.



## South Shore

Includes data from Annadale, South East Annadale, Arden Heights, Rossville, Woodrow, Huguenot, Princess Bay, Pleasant Plains, Charleston, Richmond Valley and Tottenville

**+ 24.3%**

Year-Over-Year Change in New Listings

**+ 3.3%**

Year-Over-Year Change in Closed Sales

**+ 2.2%**

One-Year Change in Median Sales Price\*

### Last 3 Months

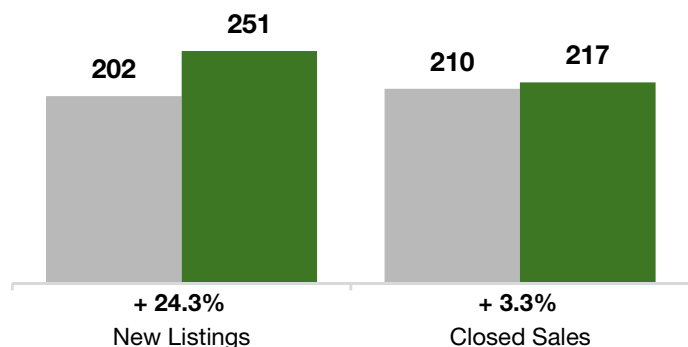
### Year to Date

	Thru 1-2017	Thru 1-2018	+ / -	Thru 1-2017	Thru 1-2018	+ / -
New Listings	202	<b>251</b>	+ 24.3%	73	<b>116</b>	+ 58.9%
Pending Sales	169	<b>184</b>	+ 8.9%	50	<b>54</b>	+ 8.0%
Closed Sales	210	<b>217</b>	+ 3.3%	59	<b>52</b>	- 11.9%
Lowest Sale Price*	\$225,000	<b>\$235,000</b>	+ 4.4%	\$275,000	<b>\$313,000</b>	+ 13.8%
Median Sales Price*	\$526,500	<b>\$538,000</b>	+ 2.2%	\$549,000	<b>\$560,000</b>	+ 2.0%
Highest Sale Price*	\$1,450,000	<b>\$1,700,000</b>	+ 17.2%	\$1,185,000	<b>\$1,362,500</b>	+ 15.0%
Percent of Original List Price Received*	95.1%	<b>95.3%</b>	+ 0.3%	95.4%	<b>94.9%</b>	- 0.6%
Inventory of Homes for Sale	289	<b>291</b>	+ 0.6%	--	--	--
Months Supply of Inventory	4.1	<b>4.0</b>	- 1.7%	--	--	--

\* Does not account for sale concessions and/or down payment assistance. Note: Activity for one month can sometimes look extreme due to small sample size.

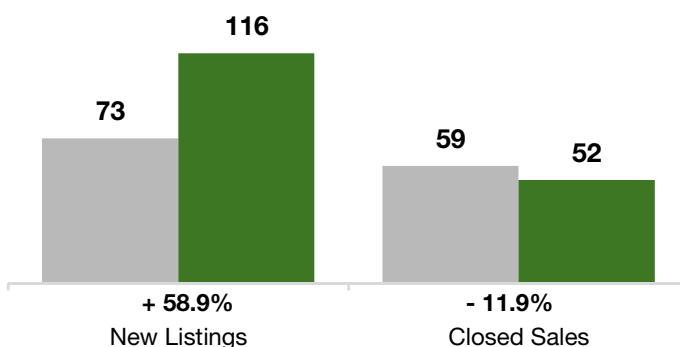
### Last 3 Months

■ Thru 1-2017  
■ Thru 1-2018

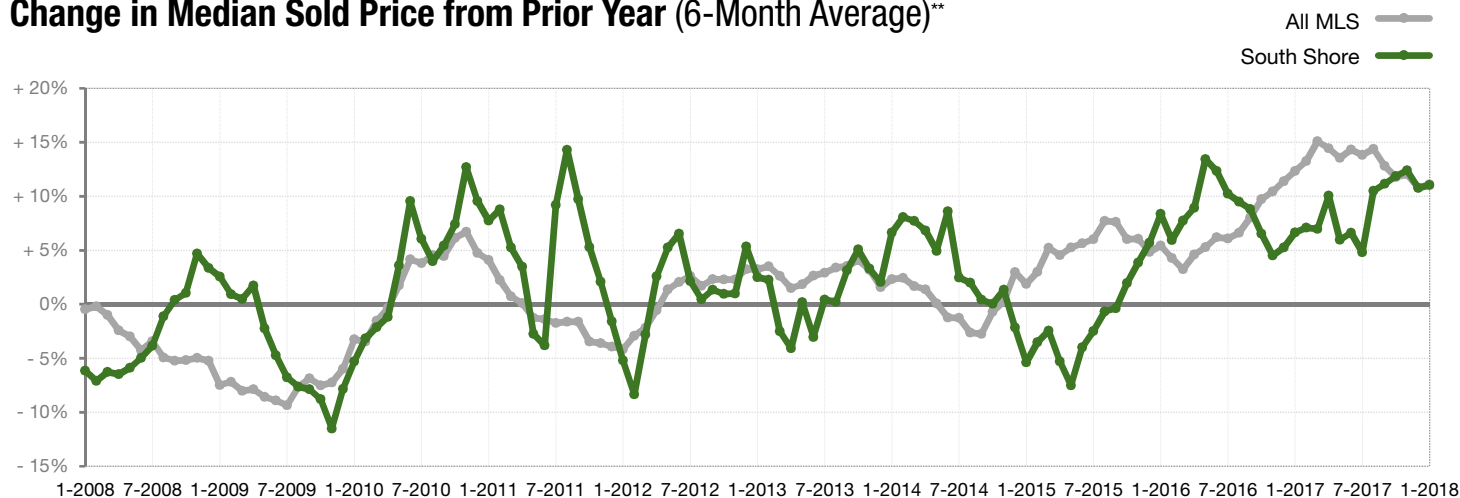


### Year to Date

■ Thru 1-2017  
■ Thru 1-2018



### Change in Median Sold Price from Prior Year (6-Month Average)\*\*



\*\*Each dot represents the change in median sales price from the prior year using a 6-month weighted average. This means that each of the 6 months used in a dot are proportioned according to their share of sales during that period. | Current as of February 5, 2018. All data comes from the Staten Island Multiple Listing Service, Inc. Report © 2018 ShowingTime.